



**dynamic**  
lives Luxury Travel Experiences

*Chalet Anna*

## Ski in Chalet next to La Prarion Cable Car, Les Houches

The beautiful Chalet Anna, which comfortably sleeps 10, was designed by the famous architect Jean-Michel Wilmotte. It's 100 yards from the Le Prarion lift in Les Houches village, the sunniest part of the Chamonix Valley, just below the main town itself.

Set in its own landscaped gardens, it boasts unsurpassed views of the Mont Blanc mountain range, which can be enjoyed through the large windows on the ground floor or from the petite balconies off the bedrooms.

The welcoming atmosphere of this sophisticated chalet greets you as soon as you enter, with a striking 'free floating' stairway and a glass fronted fire.



## Facilities

- Alarm system
- Boot Room/Ski Locker
- Car Parking
- Child friendly
- Covered parking
- Family Rooms
- High Chair
- Luxury
- Sound System
- Weekend Breaks
- Wifi
- Short Breaks
- Open Fire



## Whats Included

- Inclusive Services: :
  - 5 days housekeeping
  - High quality bed-linen and towels
  - All facilities
  - All local taxes paid
  
- VIP Services: (additional charge):
  - Massage & beauty treatments
  - English speaking ski guides/instructors
  - Heliskiing
  - Mountain guides
  - Additional wine list
  - Professional child care/nannies
  - Helicopter transfer from Geneva
  - Private Jet from your country to Geneva
  - Private airport transfers from Geneva



## Layout

### Ground Floor

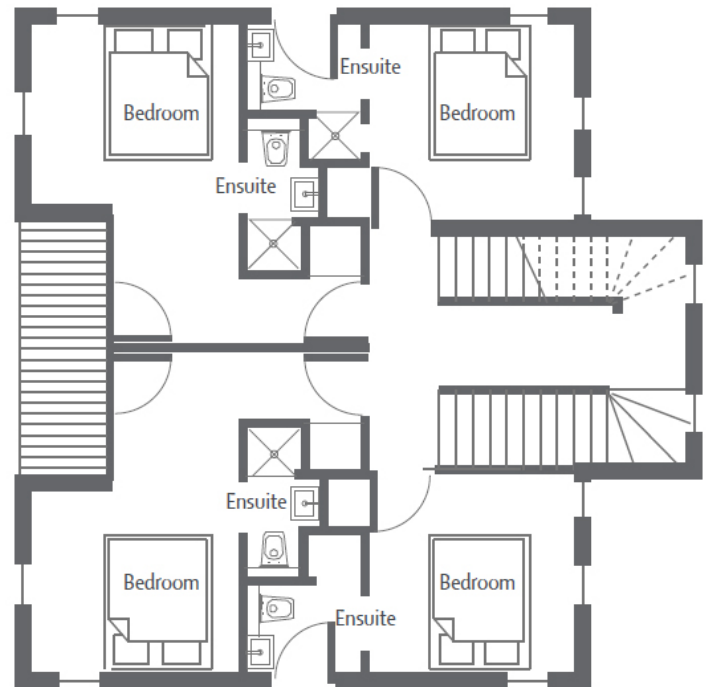
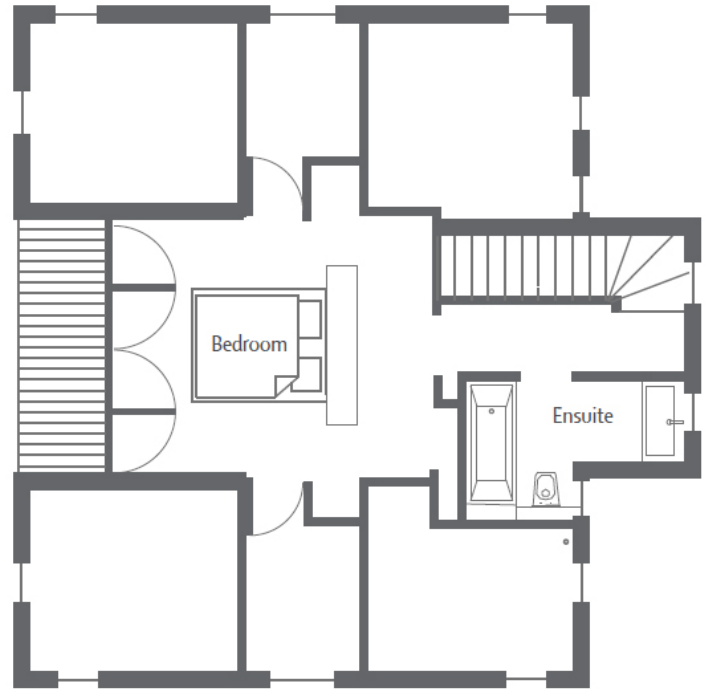
- Lounge area
- Dining room with seating for 10 guests
- Fireplace with glass front
- Open plan kitchen
- Guest toilet

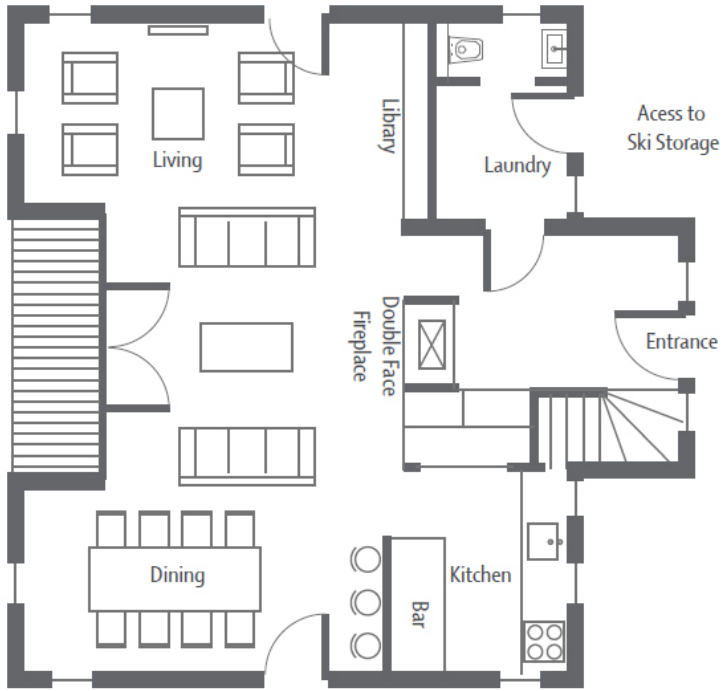
### First Floor

- Bunk bedroom
- 1 x twin bedroom with en-suite
- 2 x double bedrooms with en-suite
- 1 x shared bathroom

### Second Floor

- Master bedroom with en-suite





## Chalet Anna - Gallery Photos

